

# Ru-Ho Hsiao

03 April 1996 | hsiaohsiao9665@gmail.com | (+886) 963-785510

## PROFILE

A proactive, enterprising, diligent person approaching all tasks with responsibility and maturity. My adaptable nature, strong interpersonal skills, and interdisciplinary background make me highly effective in collaborating with diverse individuals to successfully achieve team objectives.

## SELECTED TECHNICAL DIRECTOR EXPERIENCE

<b><i>The Sum of ∞</i></b>   TNUA Thesis Production   The Performing Arts Center (PAC) Experimental Theatre	Mar.2024 Expected completion
<b><i>Inflated Hemisphere in Red and Black</i></b>   TNUA Director Presentation   Yao Yi-Wei Theatre • Achieved replicating of cow skeleton using recycled material sculpting and PVC pipe bending. (See Appendix Fig 1,2.)	Jun.2023
<b><i>Le Misanthrope</i></b>   TNUA Graduation Production   PAC Experimental Theatre • Achieved the production of Baroque-style furniture. (See Appendix Fig 3-5.) • Coordinated planning and executing the actor's movement path of trap doors.	Mar.2023
<b><i>Lemming</i></b>   TNUA Graduation Production   Yao Yi-Wei Theatre • Achieved the production of the tunnels for audience and actors entrances and exits. (See Appendix Fig 6,7.) • Spearheaded a large-scale set production within a month with just myself and my ATD. Completed two space tunnels, two Japanese style double-deck stage wagons with many trap doorsmaskings, hanging projection carrier, and more.	Oct.2022
<b><i>About the Funeral</i></b>   TNUA Graduation Production   Yao Yi-Wei Theatre • Mastered traditional bamboo construction techniques, and applied it for use in scenic construction methods. (See Appendix Fig 11.) • Constructed set props using bamboo, including load-bearing bamboo benches and a movable two-story tower. (See Appendix Fig 8-10.) • This production was impacted by COVID-19 and was forced to canceled due to scheduling conflicts. It was later eventually presented in the form of a stage exhibition.	Jul.2022
<b><i>The Nether</i></b>   TNUA Graduation Production   Yao Yi-Wei Theatre • PDLC film for the window of the interrogation room and the projection surface, controlled via lighting console. (See Appendix Fig 12-14.) • Completed the curve liquor cabinet and a tilted ceiling tile with lighting.	May.2022

## RELEVANT EXPERIENCE

<b>Curve Art Space Co., Ltd.</b> • Work as a part-time craftsman and drafter • Website: <a href="https://www.facebook.com/curveartspace">https://www.facebook.com/curveartspace</a>	Sep.2022-Present
<b>Ocean Dreamer Parade Float</b>   Farglory Ocean Park • Worked as a supervisor and drafter. (See Appendix Fig 15-17.) • The first parade float entirely made by a Taiwanese team.	Jul.2022-Sep.2022
<b><i>Phaedra's Love</i></b>   TNUA Director Presentation   T205 Theatre • Video Engineering	Jul.2022
<b>HungChi International Art. Co., Ltd.</b> • Video engineering, ATD, ASM • Website: <a href="https://hc-arts.com/tw">https://hc-arts.com/tw</a>	Jan.2020-Feb.2021
<b><i>Die Brautschimkerin</i></b>   Mei Hong Lin x TANZLIN.Z   National Kaohsiung Center for the Arts • German/English/Chinese technical interpreter	Jul.2019
<b><i>Puccini - Turandot</i></b>   Deutsche Oper am Rhein   National Kaohsiung Center for the Arts • German/English/Chinese technical interpreter	Apr.2019

## EDUCATION

<b>Taipei National University of Arts (TNUA)</b> , Taipei City, Taiwan <i>MFA in Technical Design</i>	Feb.2021 Expected Graduation   Jun.2024
<b>Fu Jen Catholic University (FJU)</b> , New Taipei City, Taiwan <i>Bachelor of German Language and Culture</i> Cumulative GPA 3.10/4.00	Sep.2014-Jun.2018

## SKILLS / LICENSES

Software	Language	Others
AutoCad 2D/3D QLab Sketchup Adobe Illustrator Microsoft Office Excel/Powerpoint/Word	Mandarin - Native English - Advanced German - Intermediate (Goethe Institut Zertifikat B1) <b>Craft</b> Woodworking Metalworking Styrofoam sculpture	Royal Academy of Dance (Classic Ballet Grade3-Grade5) Imperial Society Teachers of Dancing (Classical Ballet Grade1- Grade3) Imperial Society Teachers of Dancing (Tap Dance Grade1- Grade2) Beijing Dance Academy's Grading For Chinese Dance (Grade4) The Associated Board of the Royal Schools of Music (Grade2 Piano)

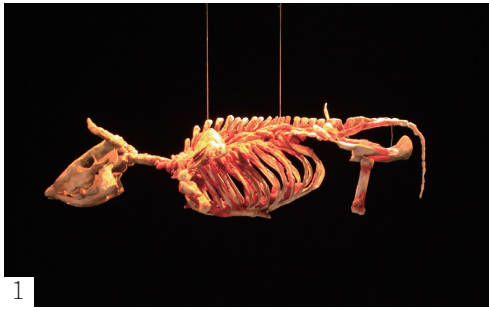


Fig 1. | Theatre photography of *Inflated Hemisphere in Red & Black*

Fig 2. | Head sculpting

Fig 3. | Theatre photography of *Le Misanthrophe*.  
(Furniture includes: a sofa, two chairs, and two stools)

Fig 4,5. | Cutting the chair back curve by hand and using a bandsaw to cut the curved chair legs, and also learned about fixing the fabric and the foam.

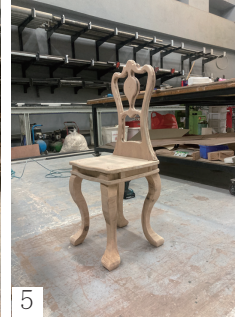


Fig 6. | Theater photography of *Lemming*.

Fig 7. | Working photo of the space tunnel.

Fig 8,9. | Exhibition photography of *About the Funeral*.  
(Movable two-story tower with the use of the Taiwanese traditional ritual altar, and traditional theater stage)

Fig 10. | Exhibition photography. (Bamboo bench)

Fig 11. | Work photos of bamboo prop construction, utilizing traditional techniques such as hemp rope or reinforcement fixing, and refining the structure to fit onto a wooden frame for easier transportation to the theatre.

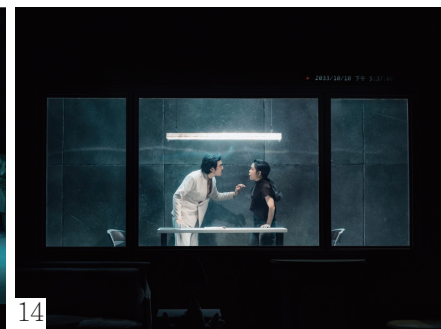
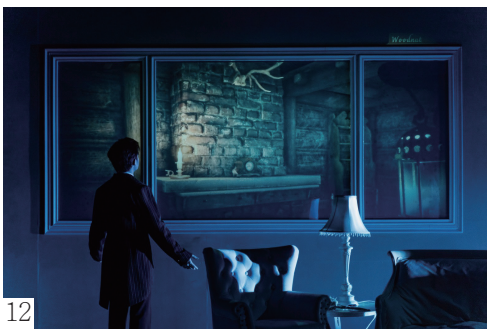
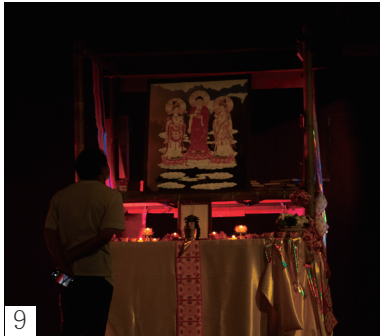


Fig 12-14. | Theatre photography of *The Nether*. PDLC film for projection and the interrogation room.

Fig 15. | Rehearsal photos of Far Glory Ocean Park parade.

Fig 16. | Supervise the styrofoam sculpting works before the FRP construction.

Fig 17. | Mechanism testing.